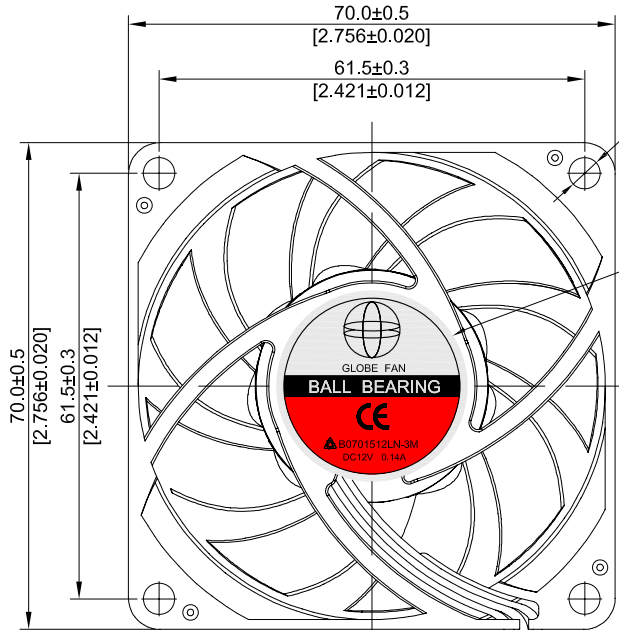
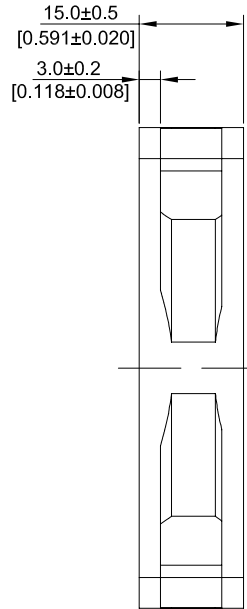


I approve this drawing is marking correctly for tooling and production
 我保证本图面标示正确并可如图制造生产
 Approved by/核准:

Signature(签名) Date(日期)

07015 : 70*70*15(2.75"*2.75"*0.59")

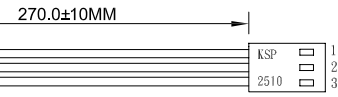
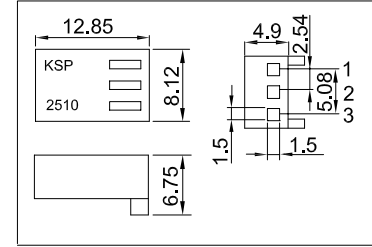
REVISIONS			
REV	DESCRIPTION	DATE	BY
0.00	Formal Release	2014/07/07	Alin



4HOLES
 $\varnothing 4.5^{+0}_{-0.2}$ DIA TYP
 Screw Torque :
 Max. 4.6~5.3kgf

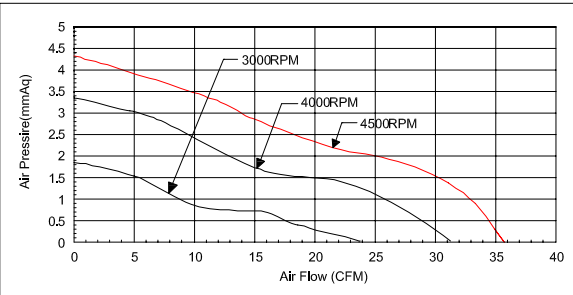
ZAWARD Sticker

Housing drawing (SCALE :1.5:1)



ELECTRICAL		
Item	Specification Conditions	
Rated Voltage	12	VDC
Operating Voltage	6~13.8	VDC
Starting Voltage	6.0	VDC
Consumption Current	0.14	Max. Amp at 12VDC
Rated Input Power	1.68	Max. Watt at 12VDC
Rated Speed	3000	RPM±10%
Max. Air Flow	23.76	ax. CFM
Max. Static Pressure	2.08	Max. mmAq
Noise Value	27.1	dBA
Operating Temp	-10°C to +70°C	
Storage Temp	-40°C to +90°C	
Insulation Resistance	>10MW	
Dielectric Strength	500VAC/1min, 600VAC/1 sec/1mA	

MECHANICAL		
Item	Specification Conditions	
Blade Material	Thermo plastic PBT GF 15%, Class UL 94V-0	
Frame Material	Thermo plastic PBT GF 30%, Class UL 94V-0	
Frame Type	Ribbed(4 holes)	
Signal Output	FG	Frequency Generator
Connection Lead Type	Terminal Connector	
Rotation Direction	CCW	Counter-clockwise viewed from inlet
Air Flow Direction	ETV	Air exhaust through ventilator
Bearing Type	2 Balls	
Net Weight	48.00	Gram
Packing	--X---Y---Z	mm, 4.8kg/CTN
	100	PCS/CTN



PIN	Function / Color
1	-GND, BLACK
2	+12V, RED
3	Signal, WHITE
Connector Housing	Equivalent of Molex or KSP
Connector Pin	2510/22-01-3037

FEATURES	
Item	Specification Conditions
Locked Rotor Protection	Yes (Auto-Restart)
Polarity Protection	Yes
Life Expectancy	70,000 Hours at 40°C 15~65% R.H.
Approvals	CE
Functions	

This information is confidential and proprietary to ZAWARD.
 And shall not be reproduced or further disclosed to anyone other than
 ZAWARD employees without prior written consent from ZAWARD.

Living Comfort PLUS
ZAWARD
 南實企業有限公司
 TEL: +886-2-2221-7098 FAX: +886-2-2221-7200
 E-mail: info@zaward.com Http://www.zaward.com

GENERAL TOLERANCE <small>Unless otherwise specified, GENERAL TOLERANCE shall apply: R or C angle is less than 0.5 if without noted</small>		
DIMENSIONS	METAL TOLERANCE	PLUM TOLERANCE
over1000	±1.20	±2.00
400~1000	±0.80	±1.20
120~400	±0.50	±0.80
30~120	±0.30	±0.50
6~30	±0.20	±0.30
0.5~6	±0.10	±0.20
ANGLES	0.5°	1.0°

MATERIAL/材質:	
/	/
WEIGHT/重量(g)	/
UNIT/單位:	MM
ROHS/環保	YES
DATE/日期:	2014/07/07

SURFACE/表面處理:	
/	/
REFERABLE/參考號	56711123N(FS-7598)
APPROVED/核准:	Carmen
CHECKED/審核:	Gary
DRAWN/繪圖:	Alin

PART TITLE	
名稱:	DC FAN/直流風扇
PART NO.	B0701512LN-3M
料號:	B0701512LN-3M

VIEW/視角
SCALE 比例:1:1
0.00 REV/版本