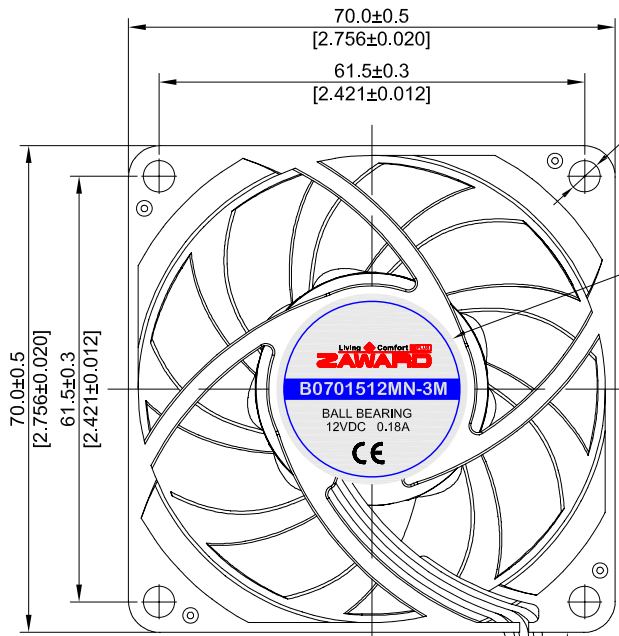
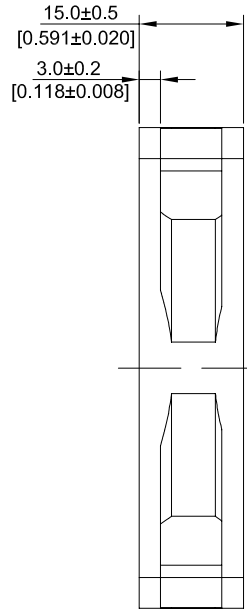


I approve this drawing is marking correctly for tooling and production
 我保证本图面标示正确并可如图制造生产
 Approved by/核准:

Signature(签名) Date(日期)

07015 : 70*70*15(2.75"*2.75"*0.59")

REVISIONS			
REV	DESCRIPTION	DATE	BY
0.00	Formal Release	2014/07/07	Alin

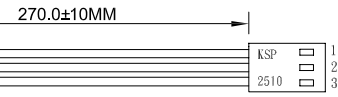
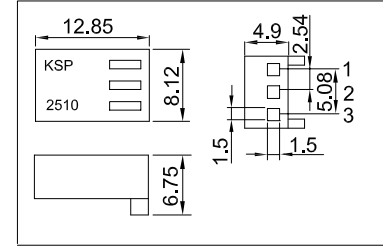


4HOLES
 $\varnothing 4.5^{+0}_{-0.2}$ DIA TYP
 Screw Torque :
 Max. 4.6~5.3kgf

ZAWARD Sticker



Housing drawing (SCALE :1.5:1)

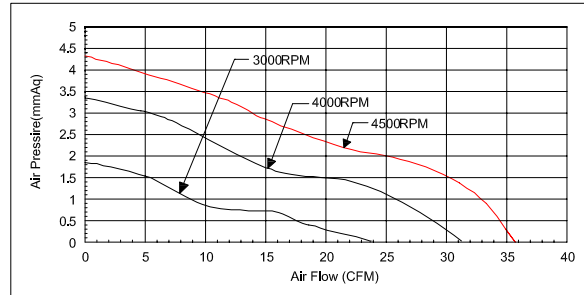


ELECTRICAL	
Item	Specification Conditions
Rated Voltage	12 VDC
Operating Voltage	6~13.8 VDC
Starting Voltage	6.0 VDC
Consumption Current	0.18 Max. Amp at 12VDC
Rated Input Power	2.16 Max. Watt at 12VDC
Rated Speed	4000 RPM±10%
Max. Air Flow	31.28 ax. CFM
Max. Static Pressure	3.26 Max. mmAq
Noise Value	36.6 dBA
Operating Temp	-10°C to +70°C
Storage Temp	-40°C to +90°C
Insulation Resistance	>10MW
Dielectric Strength	500VAC/1min, 600VAC/1 sec/1mA

MECHANICAL	
Item	Specification Conditions
Blade Material	Thermo plastic PBT GF 15%, Class UL 94V-0
Frame Material	Thermo plastic PBT GF 30%, Class UL 94V-0
Frame Type	Ribbed(4 holes)
Signal Output	FG Frequency Generator
Connection Lead Type	Terminal Connector
Rotation Direction	CCW Counter-clockwise viewed from inlet
Air Flow Direction	ETV Air exhaust through ventilator
Bearing Type	2 Balls
Net Weight	48.00 Gram
Packing	--X---Y---Z mm, 4.8kg/CTN
	100 PCS/CTN

FEATURES	
Item	Specification Conditions
Locked Rotor Protection	Yes (Auto-Restart)
Polarity Protection	Yes
Life Expectancy	70,000 Hours at 40°C 15~65% R.H.
Approvals	CE
Functions	

PIN	Function / Color
1	-GND, BLACK
2	+12V, RED
3	Signal, WHITE
Connector Housing	Equivalent of Molex or KSP
Connector Pin	2510/22-01-3037



Living Comfort PLUS
ZAWARD
 南實企業有限公司
 TEL: +886-2-2221-7098 FAX: +886-2-2221-7200
 E-mail: info@zaward.com Http://www.zaward.com

GENERAL TOLERANCE		
Unless otherwise specified, GENERAL TOLERANCE shall apply:		
R or C angle is less than 0.5 if without noted		
DIMENSIONS	METAL TOLERANCE	PLUM ASSEMBLY TOLERANCE
over1000	±1.20	±2.00
400~1000	±0.80	±1.20
120~400	±0.50	±0.80
30~120	±0.30	±0.50
6~30	±0.20	±0.30
0.5~6	±0.10	±0.20
ANGLES	0.5°	1.0°

MATERIAL/材質:	/
WEIGHT/重量(g)	/
UNIT/單位:	MM
ROHS/環保	YES
DATE/日期:	2014/07/07

SURFACE/表面處理:	/
REFERABLE/參考號	5771123N(FS-7599)
APPROVED/核准:	Carmen
CHECKED/審核:	Gary
DRAWN/繪圖:	Alin

PART TITLE 名稱:	DC FAN/直流風扇
PART NO. 料號:	B0701512MN-3M

VIEW/視角	1
SCALE 比例:	1:1
REV/版本	0.00

This information is confidential and proprietary to ZAWARD.
 And shall not be reproduced or further disclosed to anyone other than ZAWARD employees without prior written consent from ZAWARD.