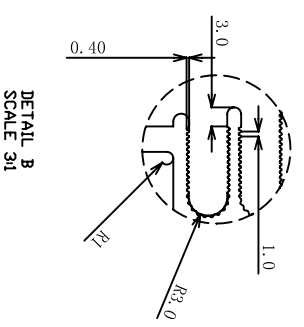
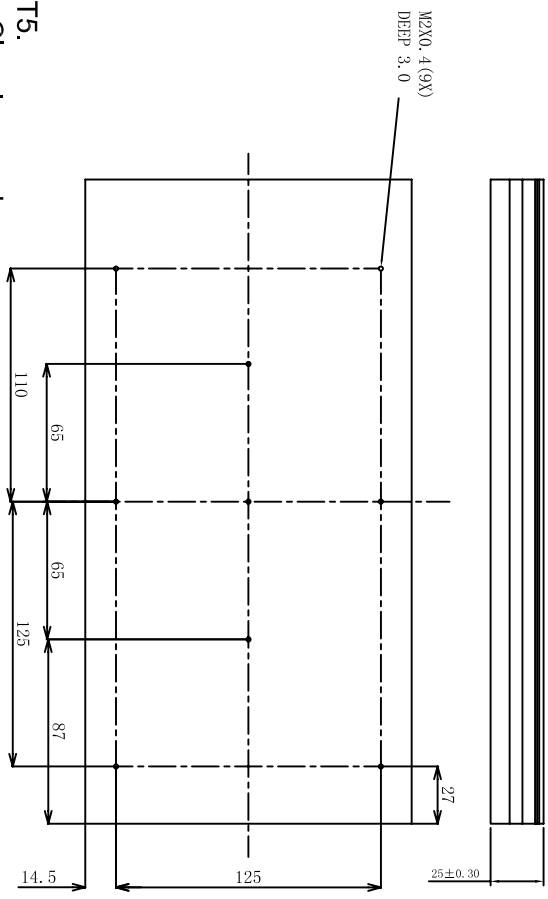
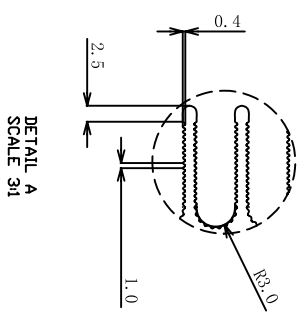
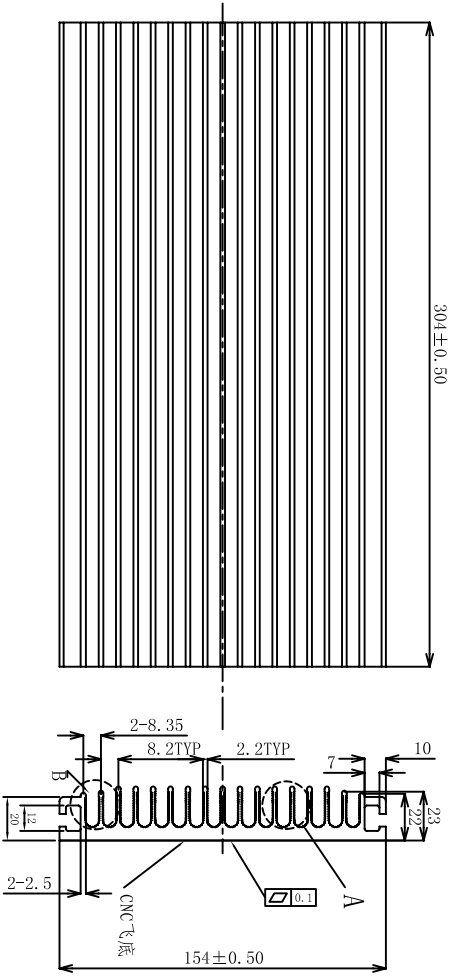


This information is confidential and proprietary to ZAWARD. And shall not be reproduced or further disclosed to anyone other than ZAWARD employees without prior written consent from ZAWARD. Any uncontrolled printed copy of this document is for reference purpose only unless expressly authorized by ZAWARD. Authorization must include number and revision.

REVISIONS		
REV.	DESCRIPTION	DATE
A	Formal Release.	2010/5/15
B	tapping holes at the base	2010/11/2



- Note:
1. Material: AL6063-T5.
 2. Surface treatment: Cleaning anode.
 3. Surface is not allowed scratches, burrs, oils.
 4. R angle is less than 0.3 if without noted. All parts must free of burrs.
 5. All parts are RoHS compliance.

GENERAL TOLERANCE, ALL DIMENSIONS ARE IN mm			
DIMENSIONS	METAL TOLERANCE	FORM ASSEMBLY TOLERANCE	
Over 316	±0.70	±0.80	
121~315	±0.40	±0.50	
31~120	±0.25	±0.30	
0~30	±0.15	±0.20	
ANGLES	0.3°	0.3°	

ZAWARD CORPORATION

APPROVED	Terry	CHECKED	Carmen	DRAWN	Gary	VIEW		mm	SIZE	A4	SHEET	1/1	RoHS	YES	WEIGHT		REFERABLE	25FX154L304C	DATE	11/02/2010	REV.	B
PART NO.		25FX154L304C		PART TITLE		25FX154L304C		MATERIAL		AL 6063-T5		FINISH		Cleaning anode		SCALE		1:1				

A B C D E F G