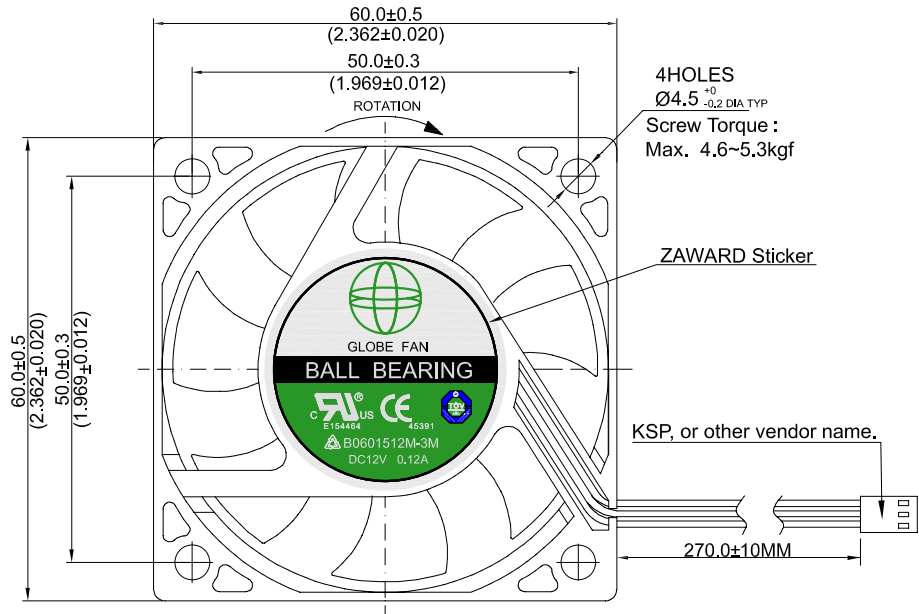
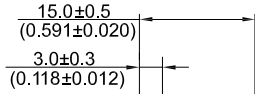


I approve this drawing is marking correctly for tooling and production  
 我保证本图面标示正确并可如图制造生产  
 Approved by/核准:

Signature(签名) Date(日期)

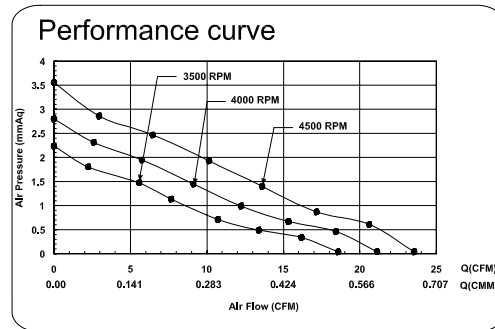
06015 : 60\*60\*15(2.36"\*2.36"\*0.59")

REVISIONS			
REV	DESCRIPTION	DATE	BY
0.00	Formal Release	2014/07/07	Alin



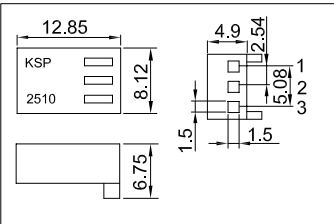
ELECTRICAL	
Item	Specification Conditions
Rated Voltage	12 VDC
Operating Voltage	6~13.8 VDC
Starting Voltage	6.0 VDC
Consumption Current	0.12 Max. Amp at 12VDC
Rated Input Power	1.44 Max. Watt at 12VDC
Rated Speed	4000 RPM±10%
Max. Air Flow	16.64 Max. CFM
Max. Static Pressure	3.11 Max. mmAq
Noise Value	27.7 dBA
Operating Temp	-10℃ to +70℃
Storage Temp	-40℃ to +90℃
Insulation Resistance	>10MW
Dielectric Strength	500VAC/1min, 600VAC/1sec/1mA

MECHANICAL	
Item	Specification Conditions
Blade Material	Thermo plastic PBT GF 15%, Class UL 94V-0
Frame Material	Thermo plastic PBT GF 30%, Class UL 94V-0
Frame Type	Ribbed(4 holes)
Signal Output	FG Frequency Generator
Connection Lead Type	Terminal Connector
Rotation Direction	CCW ounter-clockwise viewed from inlet
Air Flow Direction	ETV ir exhaust through ventilator
Bearing Type	2 Balls
Net Weight	40.40 Gram
Packing	-- X -- X -- mm, 4.04kg/CTN
	100 PCS/CTN



FEATURES	
Item	Specification Conditions
Locked Rotor Protection	Yes (Auto-Restart)
Polarity Protection	Yes
Life Expectancy	70,000 Hours at 40℃ 15~65% R.H.
Approvals	UL : E154464 , TUV : 45391 , CE
Functions	1.AS:Auto-Start

Housing drawing (SCALE :1.5:1)



PIN	Function / Color
1	-GND, BLACK
2	+12V, RED
3	Signal, WHITE
Connector Housing	Equivalent of Molex or KSP
Connector Pin	2510/22-01-3037

Living Comfort PLUS  
**ZAWARD**  
 南實企業有限公司  
 TEL: +886-2-2221-7098 FAX: +886-2-2221-7200  
 E-mail: info@zaward.com Http://www.zaward.com

GENERAL TOLERANCE	
Unless otherwise specified, GENERAL TOLERANCE shall apply:	
R or C angle is less than 0.5 if without noted	
DIMENSIONS	METAL TOLERANCE
over1000	±1.20 ±2.00
400-1000	±0.80 ±1.20
120-400	±0.50 ±0.80
30-120	±0.30 ±0.50
6-30	±0.20 ±0.30
0.5-6	±0.10 ±0.20
ANGLES	0.5° 1.0°

MATERIAL/材質:	/	SURFACE/表面處理:	/
WEIGHT/重量(g)	/	REFERABLE/參考號	576111230(FS-7593)
UNIT/單位:	MM	APPROVED/核准:	Carmen
ROHS/環保	YES	CHECKED/審核:	Gary
DATE/日期:	2014/07/07	DRAWN/繪圖:	Alin

PART TITLE 名稱:	DC FAN/直流風扇	VIEW/視角	1
PART NO. 料號:	B0601512M-3M	SCALE 比例:	1:1
		0.00 REV/版本	

This information is confidential and proprietary to ZAWARD.  
 And shall not be reproduced or further disclosed to anyone other than ZAWARD employees without prior written consent from ZAWARD.