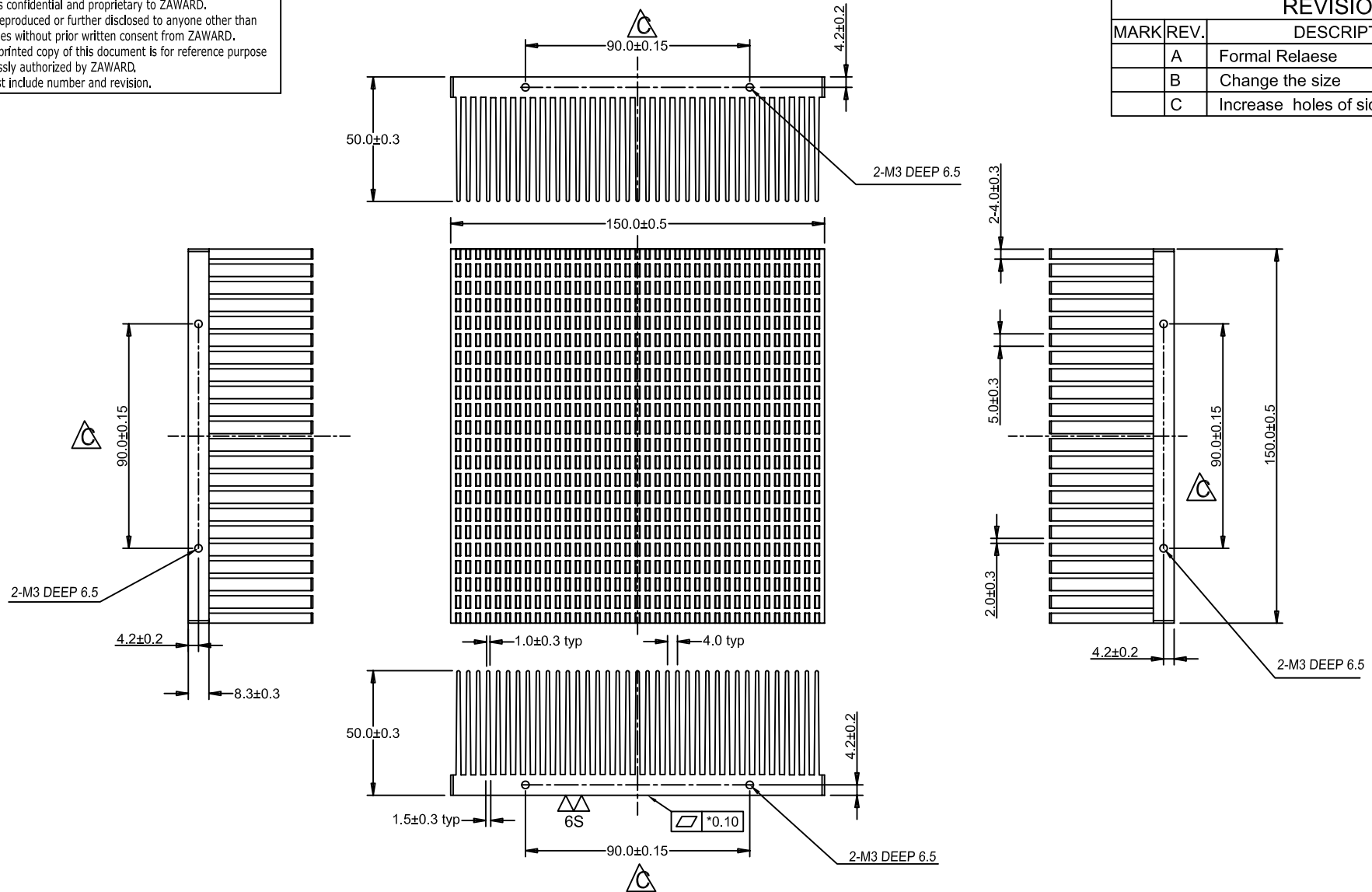


This information is confidential and proprietary to ZAWARD.  
 And shall not be reproduced or further disclosed to anyone other than  
 ZAWARD employees without prior written consent from ZAWARD.  
 Any uncontrolled printed copy of this document is for reference purpose  
 only unless expressly authorized by ZAWARD.  
 Authorization must include number and revision.

REVISIONS			
MARK	REV.	DESCRIPTION	DATE
	A	Formal Release	07/31/2012
	B	Change the size	12/28/2012
	C	Increase holes of sides	11/26/2013



Note:

1. Material: Al6063-T5
2. Surface treatment: Clear Anodized with nature anodized thickness more than 6µm
3. Surface is not allowed scratches, burrs, oils.
4. R angle is less than 0.3 if without noted, All parts must free of burrs.
5. All parts are ROHS compliance

GENERAL TOLERANCE, ALL DIMENSIONS ARE IN mm		
DIMENSIONS	METAL TOLERANCE	RESH ASSEMBLY TOLERANCE
Over 120	±0.30	±0.50
60~120	±0.25	±0.40
31~60	±0.20	±0.30
0~30	±0.15	±0.20
ANGLES	0.3°	0.3°

**ZAWARD CORPORATION**

PART NO.		50EC150L150C		PART TITLE		Heat sink	
MATERIAL		AL6063-T5		FINISH		Clear Anodized	
SCALE		1:1		DATE		11/26/2013	
REV.		C		REFERABLE			
SIZE		SHEET		ROHS		WEIGHT	
A4		1/1		YES		1122g	

APPROVED	Carmen	CHECKED	Gary	DRAWN	Alin	VIEW	mm
----------	--------	---------	------	-------	------	------	----